



Lyoprinter LM®

Gali



Screen printing onto long table

It is the only traditional printing system which enables **to obtain exceptional printing results** and still remains as **indispensable throughout the time** and the introduction of the new printing technologies.

The printing mode, wet-onto-dry, **ensures perfect and uniform final results** of high quality. Based on this printing system, the Gali carriage displaces onto a long table whereas the fabric remains fixed to the table surface while printing to ensure:

- Maximum precision
- Great flexibility in designs and runs
- **Possibility of printing an unlimited number of colours**

Another advantage of this printing system is its versatility for **printing on any flat surface material**, whether soft or hard. This increases the range of fabrics to be printed, from fine silk to thick carpets, including other kind of materials such as paper, plastic, leather,...



Lyoprinter LM

The Gali LM screen printing carriage offers the possibility of the traditional printing which still **stands for nowadays new trends**. This allows GALÍ to respond to the needs of the industry of fashion and decoration, which demands a variety of products of high quality and exclusive designs.

The Gali LM screen printing carriage is **suitable for any kind of fabric without the limitation of its composition, density or thickness**. The most common applications are the printing on silks (scarves / ties) and upholstery in which quality is the main objective. It is also widely used in the printing of woollen shawls and stoles, lycra for bathing suits, home textiles and other multiple applications.

The Gali technological innovations over the years have substantially increased the performance of the carriage regarding its utilization, speed and precision and at the same time maintaining its high quality final results. The carriage is PLC controlled. **The digital control panel is very easy to use** and available in different languages: Spanish, English, French, Chinese, Turkish,...





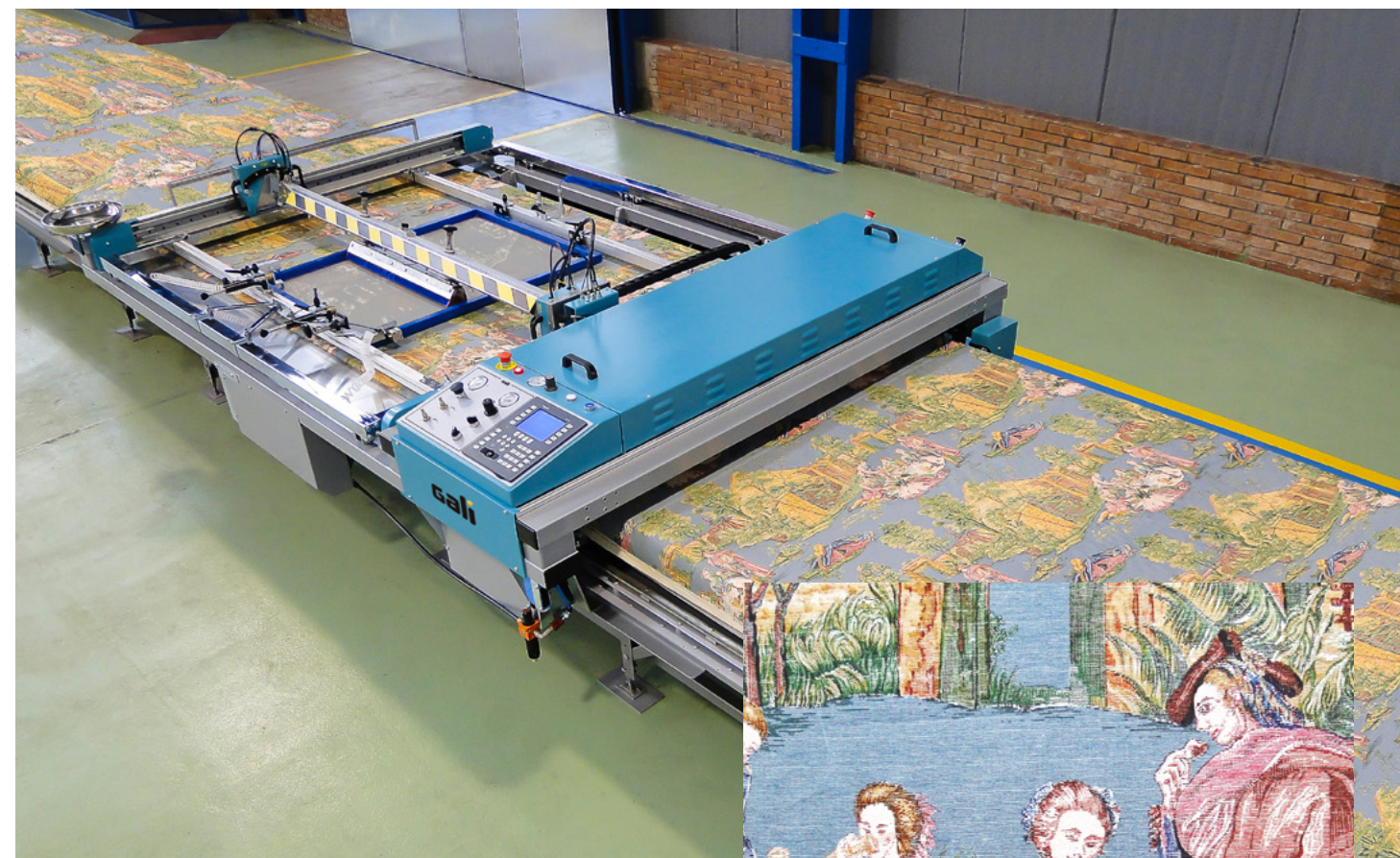
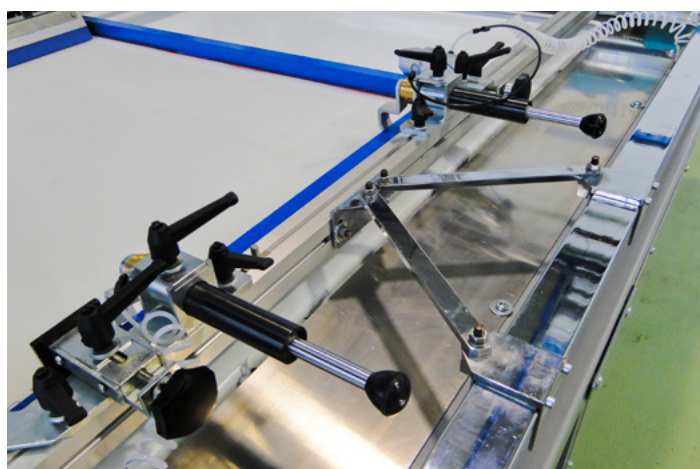
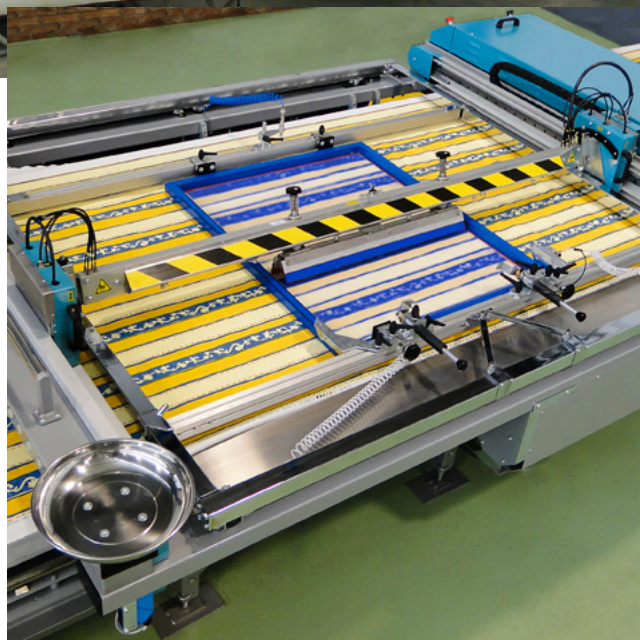
Lyoprinter LM

Maintaining the structure of closed square, it has been achieved a very **light-weight** but robust carriage, **with more flexibility and work speed**. This increase in printing speed and precision is thanks to the displacement system along the table by means of a double zipper.

The squeegee holder bridge of the machine has been designed to give the same uniform pressure all along the squeegee and therefore also upon all the screen, ensuring a perfect uniformity across the complete printed surface. **The many squeegee working options** allow the continuous or alternate printing, the speed setting, the variation in amount of strokes, etc, permitting to fit the correct adjustments for all the different fabrics and designs to be printed.

In order to respond to the customer needs, GALÍ offers the possibility to use the different types of screen fixations (top, Italian, etc) which are actually present in the market.

The maintenance for the GALÍ LM Printing carriage is simple and minimal.



Quality of printing

The LM machine receives an excellent rating from the printing professionals in the three key parameters in evaluating the quality of the machine:

ACCURACY: It is mandatory, for the achievement of a high quality printing, that the register and joints among all the printing areas have to be perfect. To obtain these, it will depend on the screen fixation and the printing equipment used. The GALÍ LM carriage ensures an excellent position precision, according to the rapport. Maximum error $\pm 0.06\text{mm}$. It also permits the use of profiles as thin as allowed by the engraving of the screen with the option of one-way squeegee stroke.

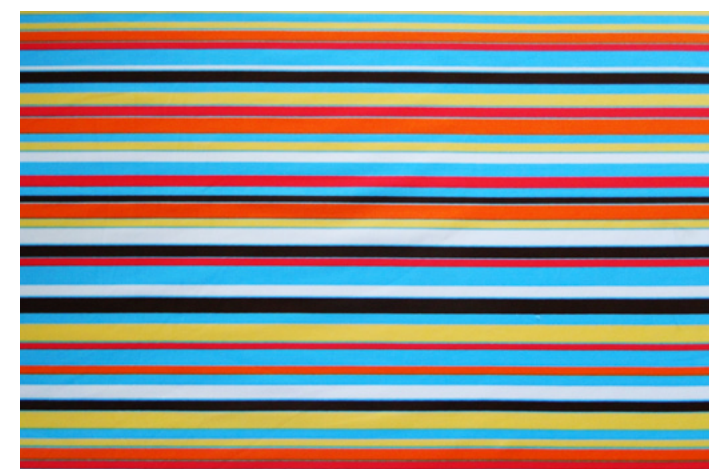
UNIFORMITY IN THE SQUEEGEE STROKE PRINTING: Thanks to the pneumatic system of the machine, the **pressure is uniformly distributed all along the squeegee** and therefore also evenly upon the screen ensuring a perfect evenness across the printed surface.

The **degree of colour penetration** in thick fabrics obtained with the LM is greater than that obtained by manual printing or other machines. This is because in the LM printing carriage the pressure on squeegee is heavier and can reach up to 60 kg. This is a big advantage when printing carpets, thick wools, terry towels,...



Great printing surface

The standard LM carriages allow the printing onto **surfaces of 2200 mm** in the warp direction and **2000 mm** in the weft direction. On request, we supply LM carriages to print **special sizes** for width and repeat up to 3200 mm and 6000 mm respectively.





Gali table

For maximum precision printing, it is imperative that all of the production equipment, in which the table is a basic element, have to be of optimum quality.

The metal structured GALÍ table offers not only the adequate rigidity but the following advantages as well:

- Corrosion protection.
- Plate sliders are used to allow the self-correction of the metal structure expansion caused by ambience temperature variations.
- Easy levelling as per the floor flatness by means of regulating tensors.

An ideal complement for the table is our Gali heating blanket. It ensures a faster colour printing, very much needed in cold or moisture environmental conditions. Our heating blanket is automatic and allows to programme the thermal graduation for the different printing options.

In continuous printing, the approximate power consumption of the thermal blanket is about 0,58 Kw per hour per square meter of the heated surface (valid consumption when settled +15°C degrees above ambience temperature)



The electrical standard supply is 400V/three-phase. GALÍ offers as well the components to cover the table, consisting in a top covering and double felt, ensuring the correct final printing results.



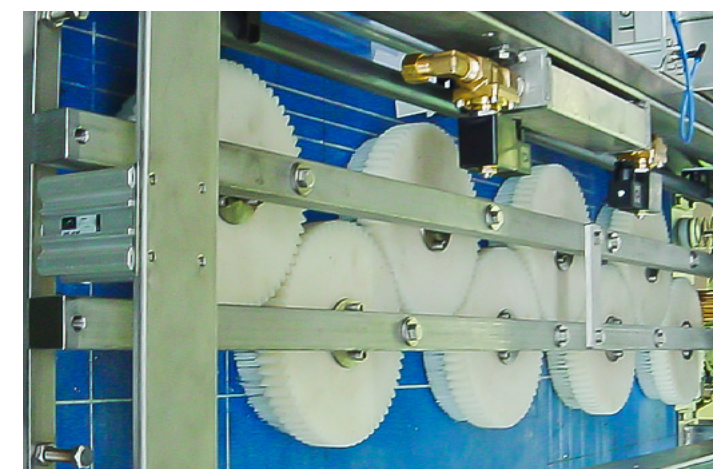
Washing carriage

The Gali washing carriage, is an ideal complement which facilitates the job of cleaning the printing table surface. It is essential for the larger printing equipments and installations, as well as when frequently printing many different designs and/or for longer tables.

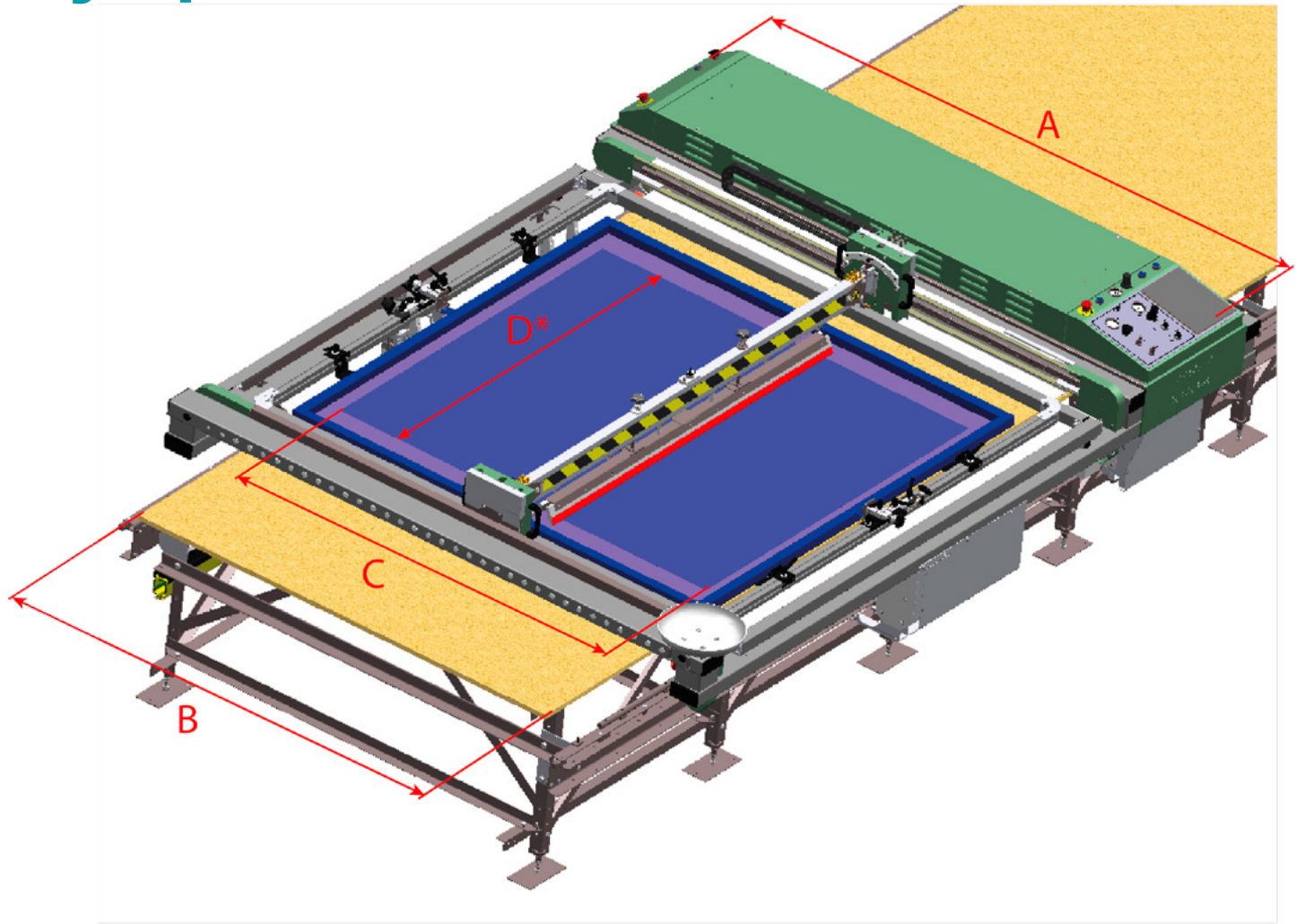
Automatic, simple and easy to use. The GALÍ washing carriage is offered in fully pneumatic version up to 1800 mm of printing width (until GALÍ type 12). For larger types of bigger printing widths, it is incorporated a small electrical motor to assist in the translation movement.

The corrosion protections employed in the materials ensure a long life of our washing carriage. The maintenance is reduced to the observance of the correct oil level and the replacement of the brushes as per its wear.

- Type and dimensions same as the LM carriages
- Optional transport carriage for its parking
- Approx. air consumption : 200 l/mnt (according speed and type)
- Working air pressure: 8 bars



Lyoprinter LM®



Type	A (mm) Carriage width LMT	B (mm) Table width	C (mm) Printing width
08	2042	1500	1200
10	2342	1800	1500
11	2492	1950	1650
12	2642	2100	1800
14	2942	2400	2100
16	3242	2700	2400
18	3542	3000	2700
20	3842	3300	3000

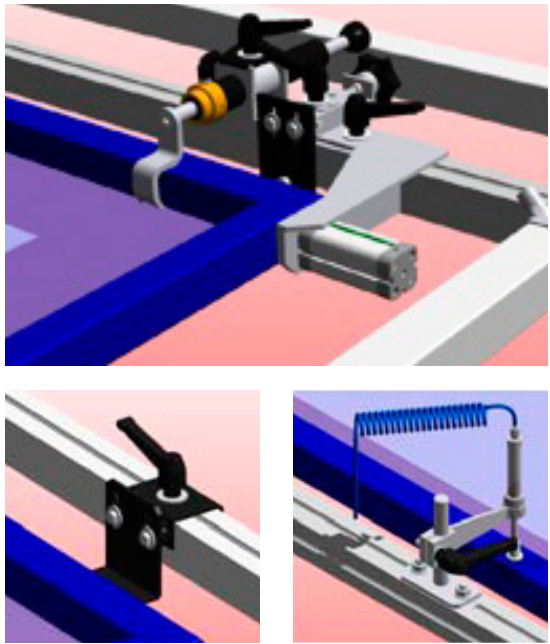
Technical data	
Printing sequence	programmable
Number of strokes	variable
Back screen lifting highness	adjustable 30/150 mm
Maximum stroke speed	2,5 m/s
Maximum driving speed	2 m/s (**)
Maximum squeegee pressure	60 kg
Nominal electrical power	4,5 Kw
Working air pressure	6/8 bars
Feeding electrical voltage	400 V three-phase

* D: Repeat: 1200, 1600, 2000

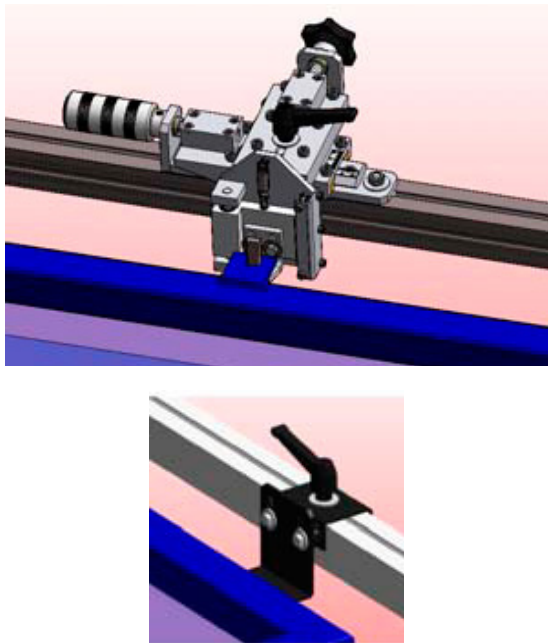
** For machines type 14 or bigger and special machines the speed may be limited upon technical considerations

Type of fixations

Top fixations

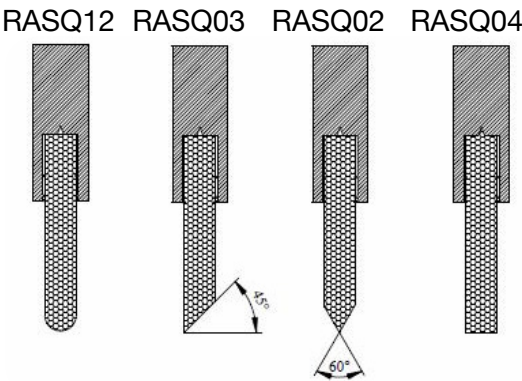


Italian fixations



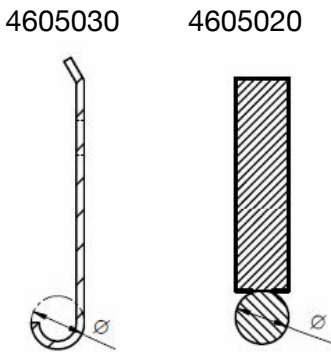
Type of squeegee profile

Polyurethane squeegees



* Different shore: 60°, 65°, 75° Sh

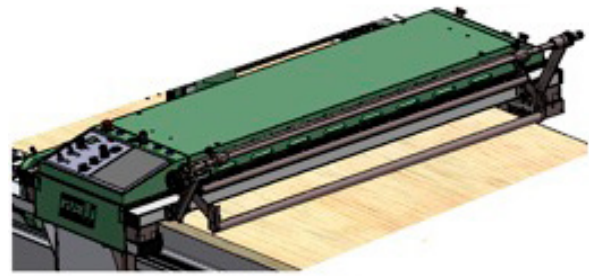
Metal squeegees



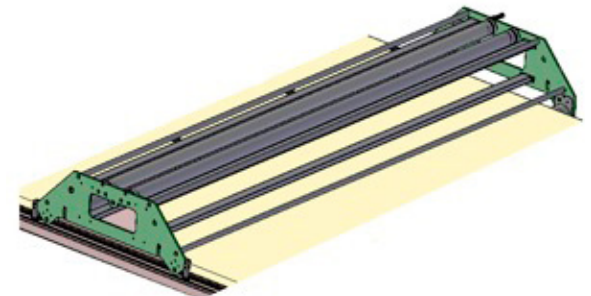
* Different Ø: 6, 8, 10, 12 mm

Fabric extender

For carriages up to type 12



For carriages bigger than type 12

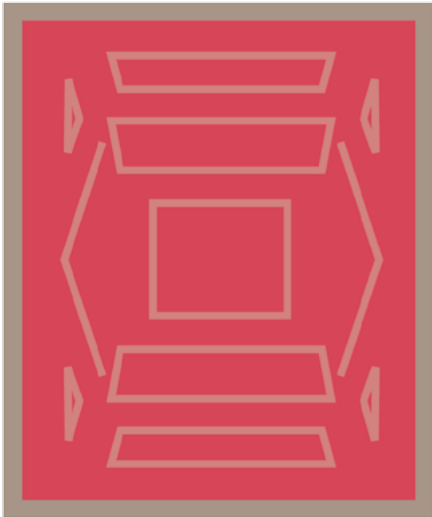
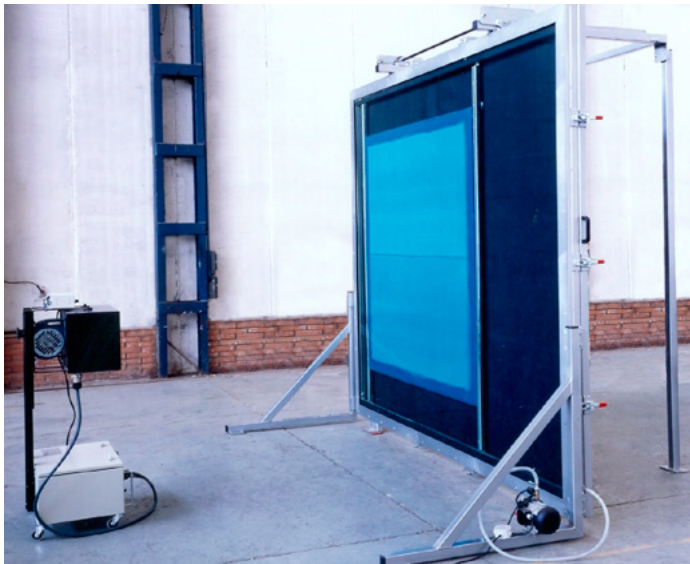


Stretching machine



Automatic. For longitudinal and transversal stretching of mesh. Possibility of frame elevation for a better adjustment of the mesh to the screen frame. The mesh is clamped by articulated plates.

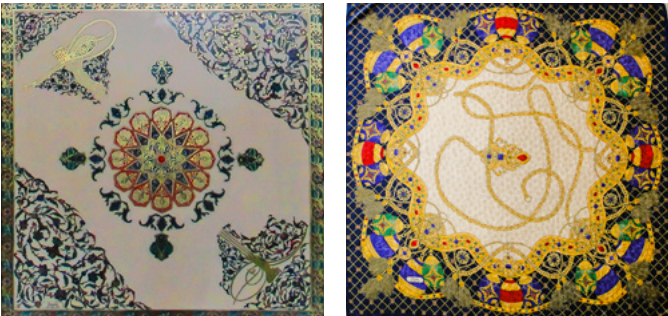
Engraving machine



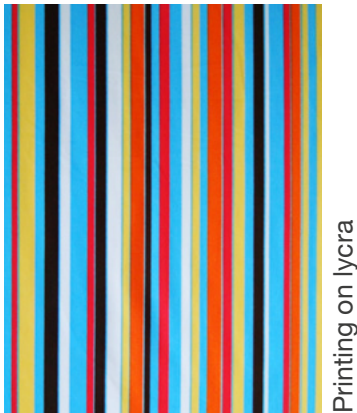
The glass remains fixed while the blanket moves by lateral guides. Fitted inside with reference pins to set the screens always in exactly the same place.
Halogen lamps of 2000 to 5000 W, one or two depending on size.



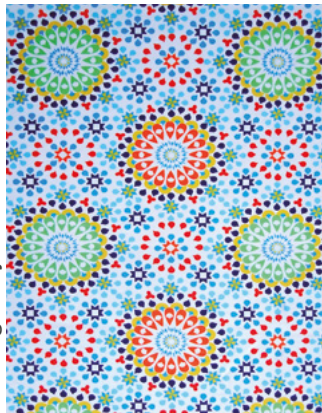
Printing up to 32 colours or more



Printing for upholstery



Printing on lycra



Printing for home textile



Shawls printing



About us

Gali Internacional was first set up in 1951 as an enterprise for the manufacture of mechanical construction. Thanks to its creative developments at present it has a well structured plant in Sentmenat (Barcelona) Spain, where it is developed and produced the majorities of Gali's products, mainly:

- Air starter for diesels engines
- **Printing textile machinery**
- Automotive equipment
- Flameproof protection

Gali Internacional, is an organization directed to the customer on international basis, as it shows with our companies in Germany, Italy, France and China, besides we count with a large list of collaborators world wide.



Technical Solutions since 1951

GALI INTERNACIONAL, SA
C/ Josep Tura, 5
08181 Sentmenat (Barcelona)
SPAIN
T +34 93 715 31 11
F +34 93 715 07 51
gali@galigrup.com

GALI DEUTSCHLAND, GmbH
Am Ockenheimer Graben, 32
55411 Bingen
GERMANY
T +49 672 11 00 26
F +49 672 11 31 44
info@gali.de

GALI FRANCE, SA
1, Rue Barthélemy Thimonnier
66200 Elne
FRANCE
T +33 468 22 20 05
F +33 468 22 47 44
comexp@gali-france.fr

**ZHENJIANG GALI INT.
TRADING CO, Ltd.**
Runzhou Industrial Park
212004 Zhenjiang
CHINA
T +86 051185725611
china@galigrup.com

GALI ITALIA, Srl
Via Dante snc
22070 Cirimido (CO)
ITALY
T +39 031 46 12 24
F +39 031 46 12 45
gali@gali-italia.it

www.galigrup.com