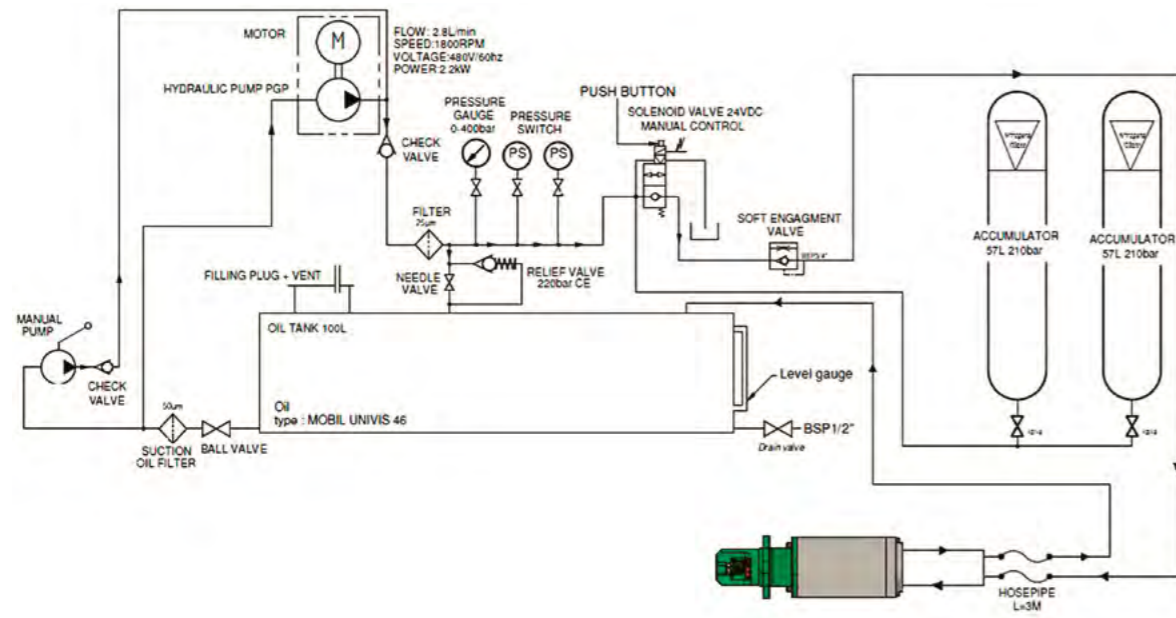


Installations (Piping & Instrumentation drawing hydraulic unit)



Customized Hydraulic Starting Systems

Hydraulic station with ATEX components.



All our Hydraulic Starter are available in ATEX version.



Technical Solutions since 1951

GALI INTERNACIONAL, SA
 C/ Josep Tura, 5
 Pol. Ind. Mas d'En Cisa
 08181 Sentmenat (Barcelona)
 SPAIN
 T +34 93 715 31 11
 gali@galigrup.com

GALI DEUTSCHLAND, GmbH
 Am Ockenheimer Graben, 32
 55411 Bingen
 GERMANY
 T +49 672 11 00 26
 F +49 672 11 31 44
 info@gali.de

GALI FRANCE, SA
 Rue Barthélémy Thimonnier, 1
 66200 Elne
 FRANCE
 T +33 468 22 20 05
 F +33 468 22 47 44
 comexp@gali-france.fr

**ZHENJIANG GALI
 INT. TRADING CO., Ltd.**
 Runzhou Industrial Park
 212004 Zhenjiang
 CHINA
 T +86 051185725611
 china@galigrup.com

GALI ITALIA, Srl
 Via Dante snc
 22070 Cirimido (CO)
 ITALY
 T +39 031 46 12 24
 F +39 031 46 12 45
 gali@gali-italia.it

GALI MALAYSIA
 GALI Malaysia Office
 KUALA LUMPUR
 M +60 16 2777 602
 r.sowald@galigrup.com

www.galigrup.com

Hydraulic Starters



Applications

The Hydraulic Starters are mainly used to start diesel engines generally emergency sets for marine, oil and gas, off-shore, etc.

Advantages

Very reliable as an emergency starting system, because it is a closed and independent circuit with few mechanisms.

The hydraulic starting unit can be activated manually so it is a solution when there is no external energy available (black start).

It can be used under extreme environmental conditions just using the suitable hydraulic oil.

Unaffected when stopped for long periods of inactivity, even being under damp and hostile environmental, due to its closed and sealed design that don't allow the entrance of dirt for it. The unit is always ready to start the engine.

Very low maintenance required.

Easy assembly on the engine by frontal flange.

How is the energy supplied to the starter?

The starter gets the power from the oil contained in the hydraulic unit.

This equipment includes a tank with oil and N₂ accumulator with the compressed gas and it may in-

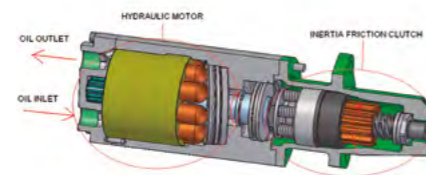
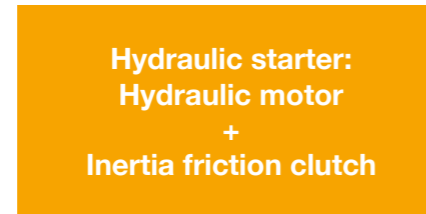
corporate an electric pump or hand pump (manual), or both.

The hydraulic unit compresses the oil until 210 bar and this oil goes into the starter forcing the movement of the hydraulic motor.

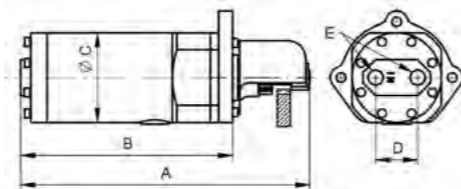
We can adapt the whole system according customer technical specifications.

How it works

The oil goes into the starter and activate the hydraulic motor. The pistons start moving the disc and that transforms the linear movement into circular one which is transmit to the inertia friction clutch. Inertia friction clutch's pinion turns.



Dimensions



Model	Displacement	Maximum torque	Maximum speed	Engine displacement	A	B	C	D	E
H5	8,65 cm ³ /rev	20 Nm	7000 rpm	0 to 5 dm ³	325	237	89	44	3/8" NPT
H10	21,95 cm ³ /rev	61 Nm	7000 rpm	5 to 8 dm ³	330	242	102	48	3/8" NPT
H15	33,80 cm ³ /rev	98 Nm	4500 rpm	8 to 18 dm ³	381,5	266,5	122	58	1/2" NPT
H20	57,26 cm ³ /rev	163 Nm	4500 rpm	18 to 41 dm ³	400	284	130	62	1/2" NPT
H25	96,28 cm ³ /rev	271 Nm	3000 rpm	41 to 74 dm ³	471	343	143	75	3/4" NPT
H30	131,88 cm ³ /rev	365 Nm	3000 rpm	74 to 110 dm ³	480	352	150	81	3/4" NPT

GALI complete hydraulic engine starting system

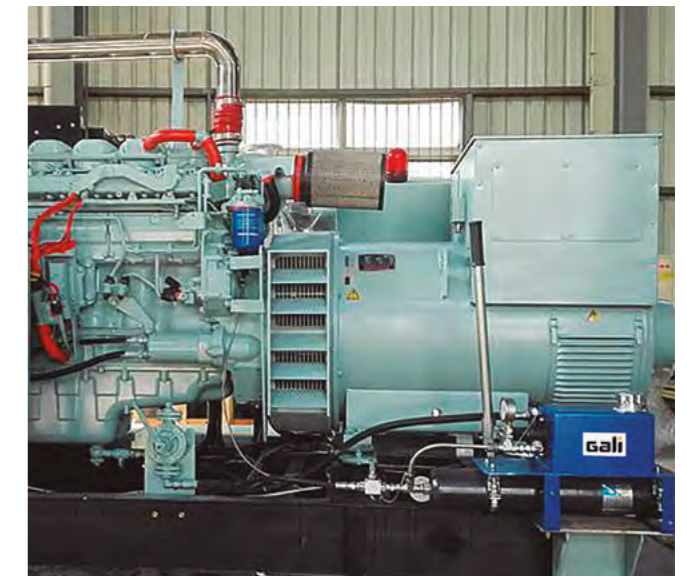
We provide a full package to ensure to our customer the right solution for each different application, from offshore project in hazardous areas to auxiliary marine generator sets.

We provide installations drawings and make the technical calculation to assure the correct size and the correct number of accumulators needed for the oil consumption for each type of engine.

We design and manufacture our hydraulic starting systems following the demands of our customers: according required number of starts, cranking time, rule NFPTA, etc.

Manual hydraulic starting system

We supply them completely assembled with hoses and the suitable hydraulic starter.



Electric Hydraulic Starting System

We supply them according to the customer request with many different options: see our request for quotation to check the different alternatives on our website.

