

Gali Slow Turning Starting System



For all Diesel, D/F & Gas Engines.



Our Slow Turning is the best solution to prevent engine water stroke due to water or oil leakage inside the cylinders.

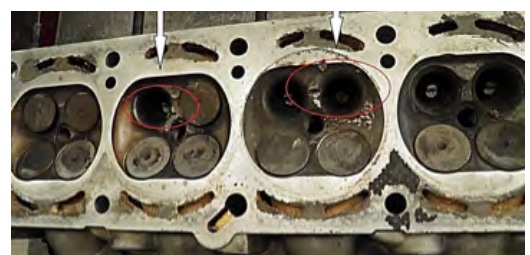
Saving cost and problems to operators and final costumers.

**Very Easy &
Safe Working Concept**

Initial turning stage at low speed to check for anomalies. If any adverse conditions are found, the starting sequence is stopped. If not, **Gali Starter** will accelerate the engine to start it.

Our safety **Starting System** detects the presence of condensates inside the cylinder heads:

- Allows the engine to stop immediately if required.
- Allows the engine not to exceed a certain speed during the safety checking process.
- Protect the important engine parts like piston, rods, bearings, etc.



Gali Slow Turning Starting System



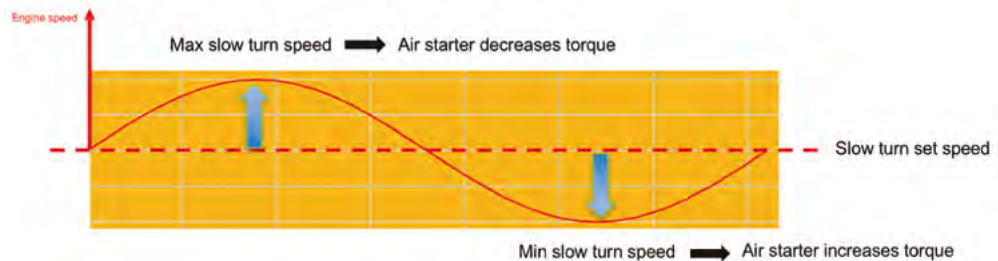
Operation principle

It consists of a variable torque supplying from the starter to the engine.

- The starter will stop giving torque when the set point slow turn speed is reached and will provide torque again when the speed starts to decrease below the set point.

• This will result in a constant speed rotation of the engine.

- The system's input is the engine speed from an inductive sensor (delivered) placed on the engine ring gear.



GALI Software

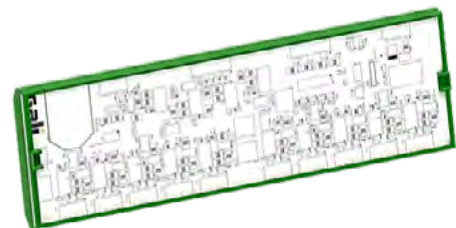
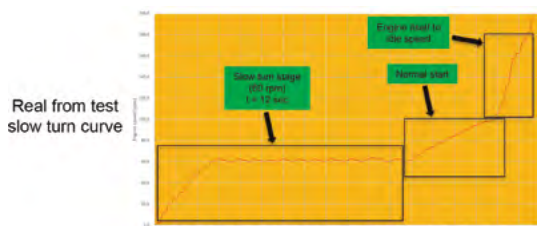
The system can be adapted to different engines.

- Possibility to set the slow turning speed (10, 15, 20, 25, 30, 35, 40,... rpm).
- Possibility to choose the slow turn duration: by time (seconds) or by number of engine turns.
- The customer can select the type of start (slow turn, slow turn + normal start, normal start).

GALI Electronic card

Performs the electronic control of the system with the input from the inductive sensor.

- Voltage 24 VDC.
- Easy to install to the engine's ECU.
- Alarm outputs, start attempt counter...



For further information contact us